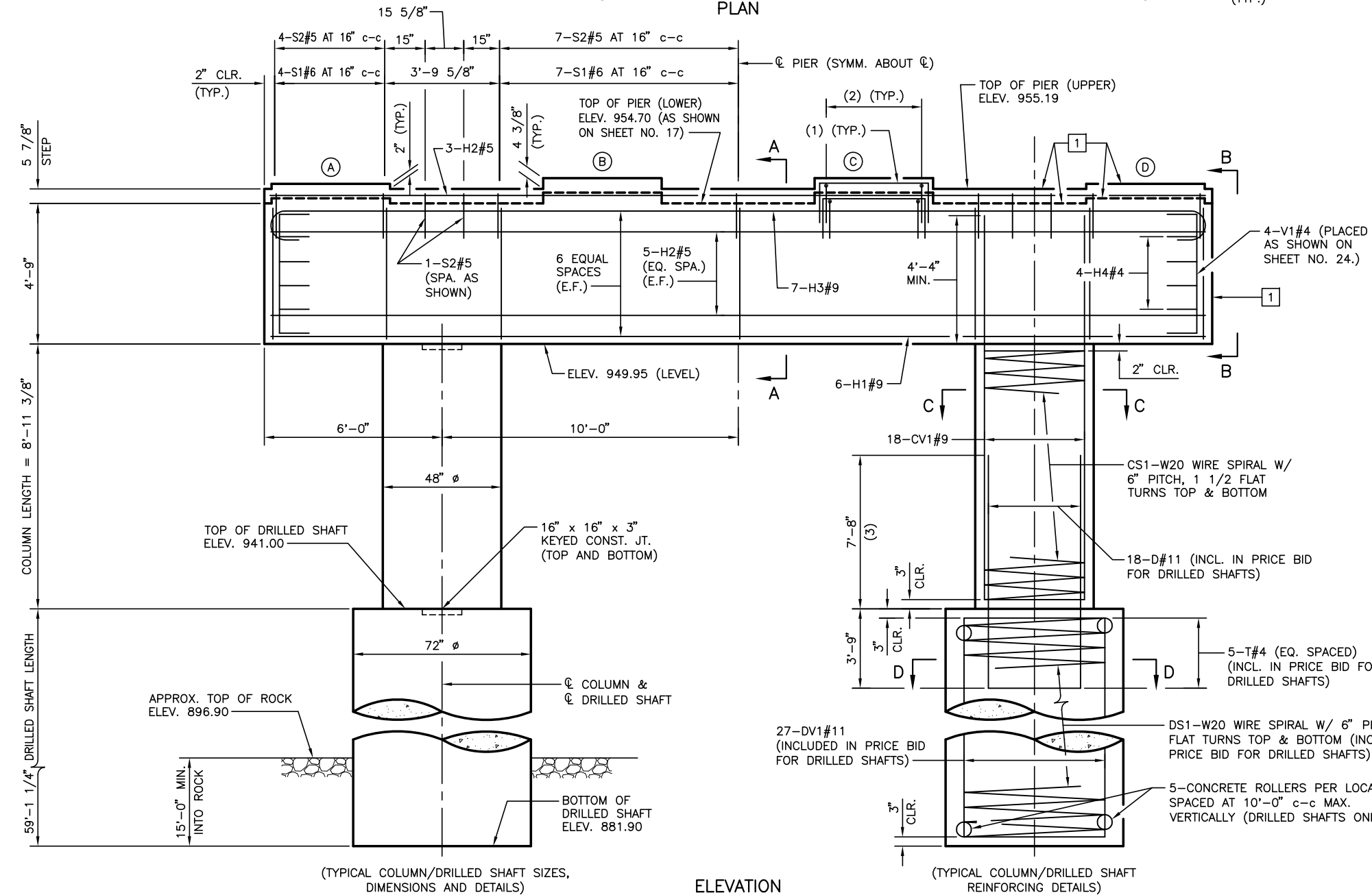


PLAN



ELEVATION

- (1) 3-P3#4 (EQ. SPA.) (TYP. EA. PED.)
- (2) 5-P4#4 (EQ. SPA.) (TYP. EA. PED.)
- (3) NOT TO BE CONSIDERED AS ADD'L DRILLED SHAFT PAY LENGTH.

SCHEDULE OF PEDESTAL ELEVATIONS		
PEDESTAL	SPAN 1 ELEVATIONS	SPAN 2 ELEVATIONS
A	955.36	954.87
B	955.55	955.06
C	955.55	955.06
D	955.36	954.87

E.F. - DENOTES EACH FACE

1 TREAT TOP OF PIER CAP, INCLUDING ALL SURFACES OF PEDESTALS AND STEP, AND ALL VERTICAL FACES OF THE PIER CAP WITH A PENETRATING WATER REPELLENT SURFACE TREATMENT.

NOTES: ALL EDGES OF THE PIER CAP SHALL HAVE A 1 1/2" CHAMFER, EXCEPT FOR EDGES OF PEDESTALS, WHICH SHALL HAVE 3/4" CHAMFERS.

FOR SECTION VIEWS, BAR BEND DETAILS, BAR LIST, QUANTITIES, AND SPIRAL REINFORCING AND CONCRETE ROLLER DETAILS, SEE SHEET NO. 24.

Design	.	S.H. 74D OVER ROCK CREEK	LOGAN COUNTY
Drawn	PKW 09/14	PIER 1 DETAILS BRIDGE "A" @ STA. 67+62.00 State Job No. 28312(04)	
Checked	.		
Approved	.		
Squad	.		